

PH.D. THESIS



# Mapping ultrastructural effects of proteotoxic stress on *S. cerevisiae*

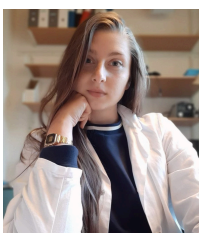
Katharina Susanne Keuenhof

DEPARTMENT FOR CHEMISTRY  
AND MOLECULAR BIOLOGY



Ph.D. thesis

Mapping ultrastructural effects of proteotoxic stress on *S. cerevisiae* | Katharina Susanne Keuenhof 2023



Katharina S. Keuenhof is a physicist-turned-biologist with a passion for electron microscopy, cake, and dance. She can be easily found in a nearby doctoral committee, advocating for student and worker's rights.

ISBN: 978-91-8069-287-8 (PRINT)  
ISBN: 978-91-8069-288-5 (PDF)  
<http://hdl.handle.net/2077/75947>