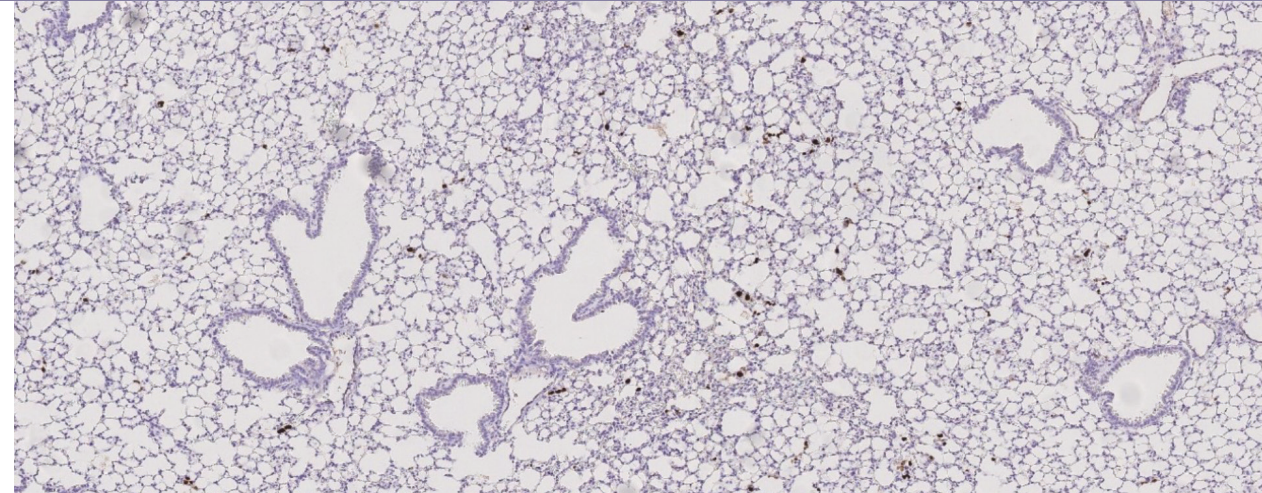


DOCTORAL
THESIS
SAHLGRENKA
ACADEMY

2021



The impact of the progranulin-sortilin axis on breast cancer stem cell activity and patient outcome | Karoline Berger

The impact of the progranulin- sortilin axis on breast cancer stem cell activity and patient outcome

Karoline Berger

**SAHLGRENKA ACADEMY
INSTITUTE OF BIOMEDICINE**



ISBN 978-91-8009-390-3 (PRINT)
ISBN 978-91-8009-391-0 (PDF)

Printed by Stema Specialtryck AB, Borås