

SOM-rapport nr 2009:17

S O M

Trender i Skåne

Syd-SOM-undersökningen 2001-2008

Susanne Johansson
Lennart Nilsson

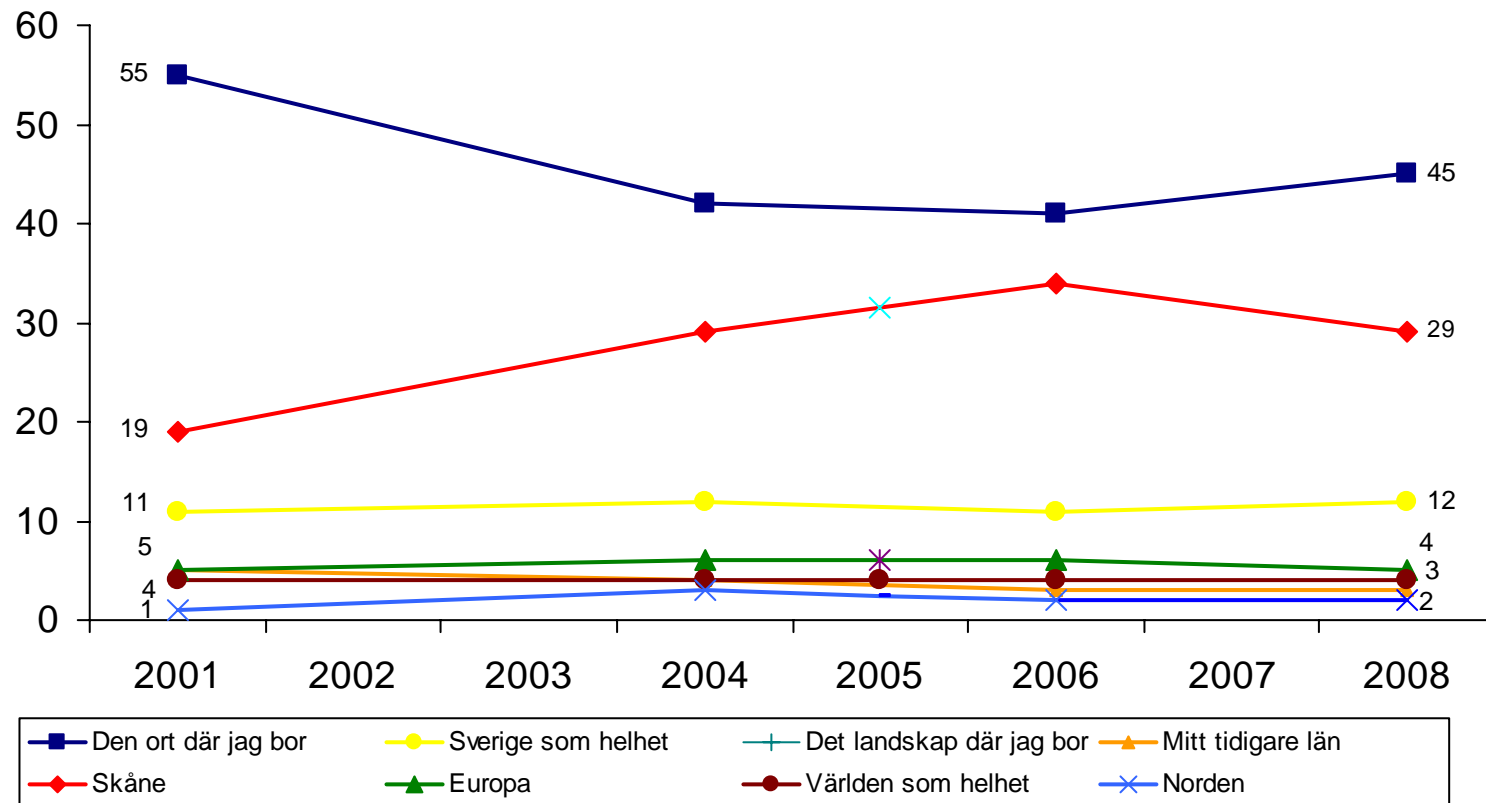
SOM-INSTITUTET
samhälle opinion massmedia

s
a
m
h
ä
l
l
e
o
p
i
n
i
o
n
m
a
s
s
m
e
d
i
a



Figur 1

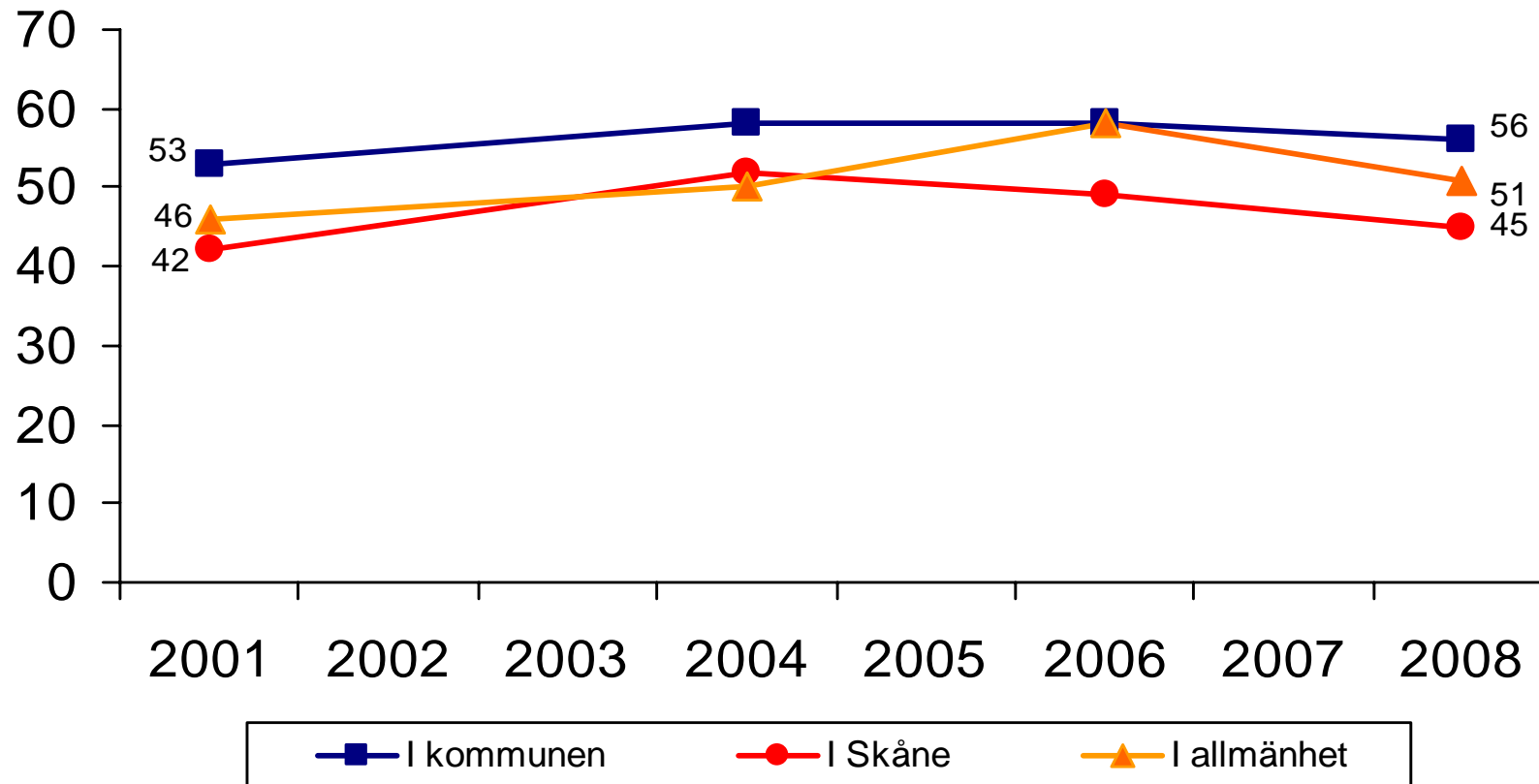
Upplevd geografisk hemhörighet (procent)

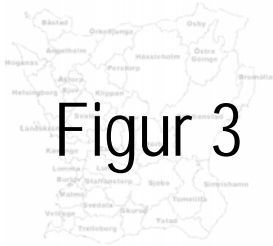




Figur 2

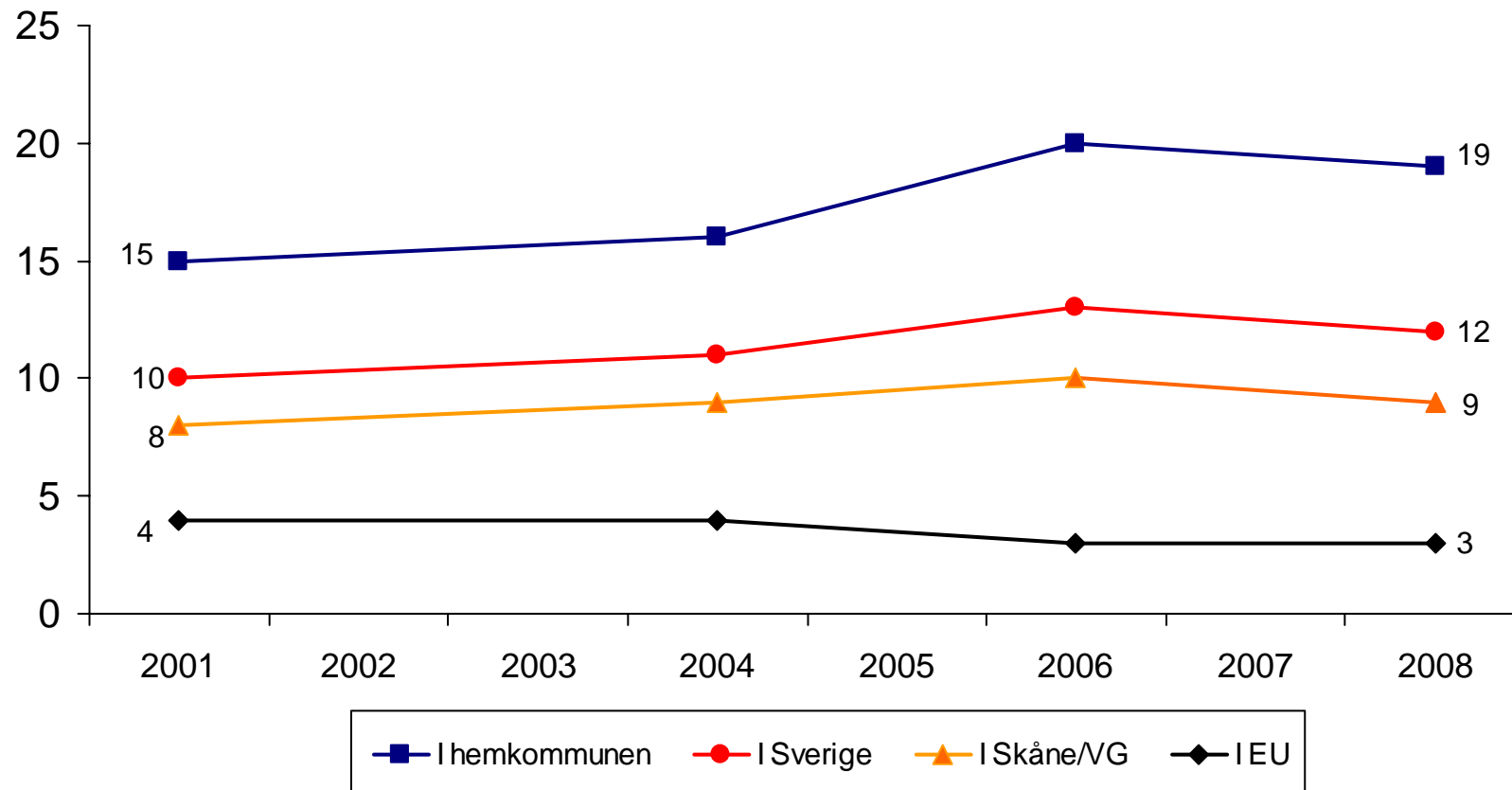
Intresse för politik (procent)

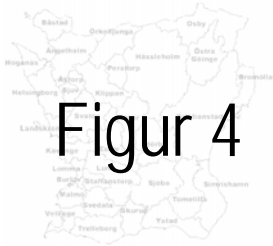




Figur 3

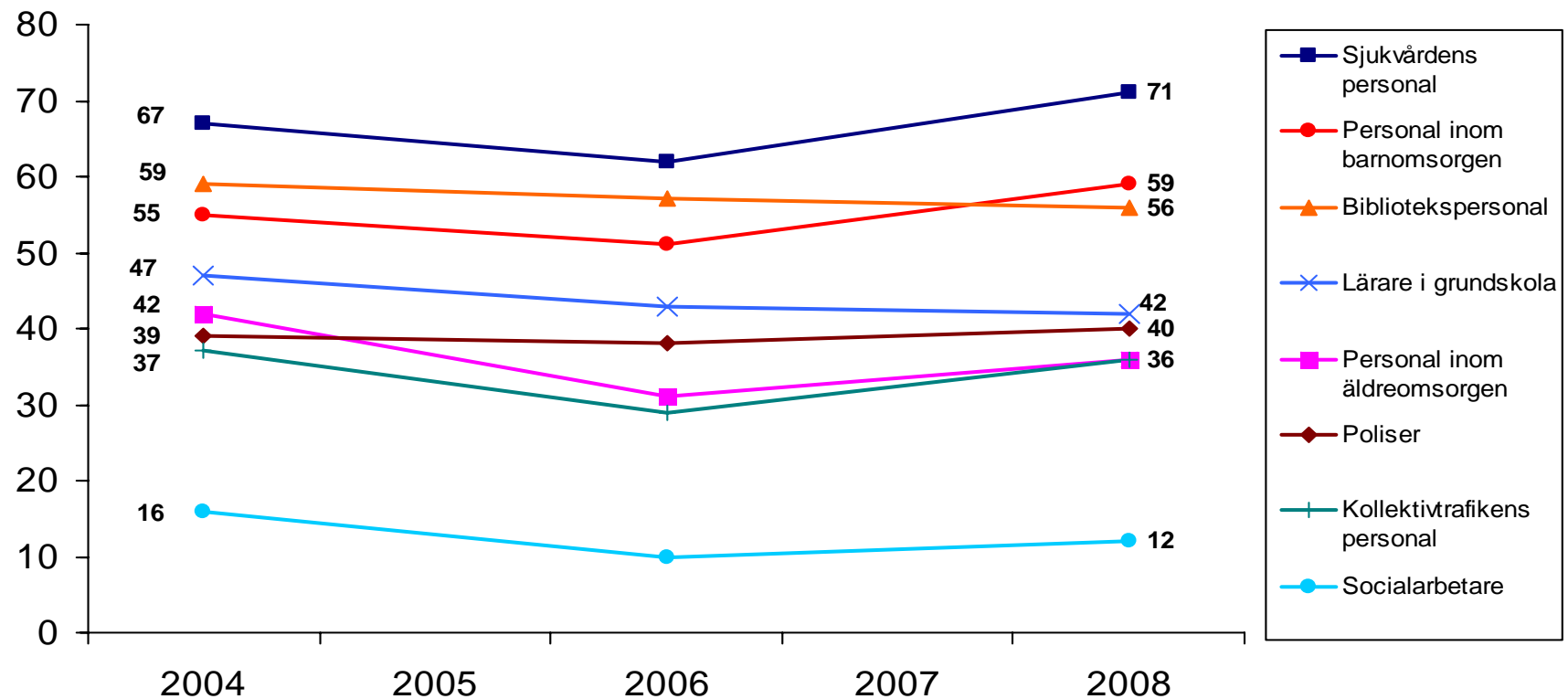
Andel som anser sig ha goda möjligheter att påverka (procent)

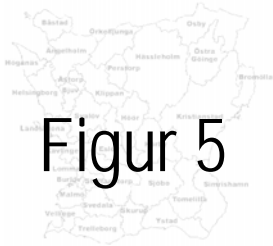




Figur 4

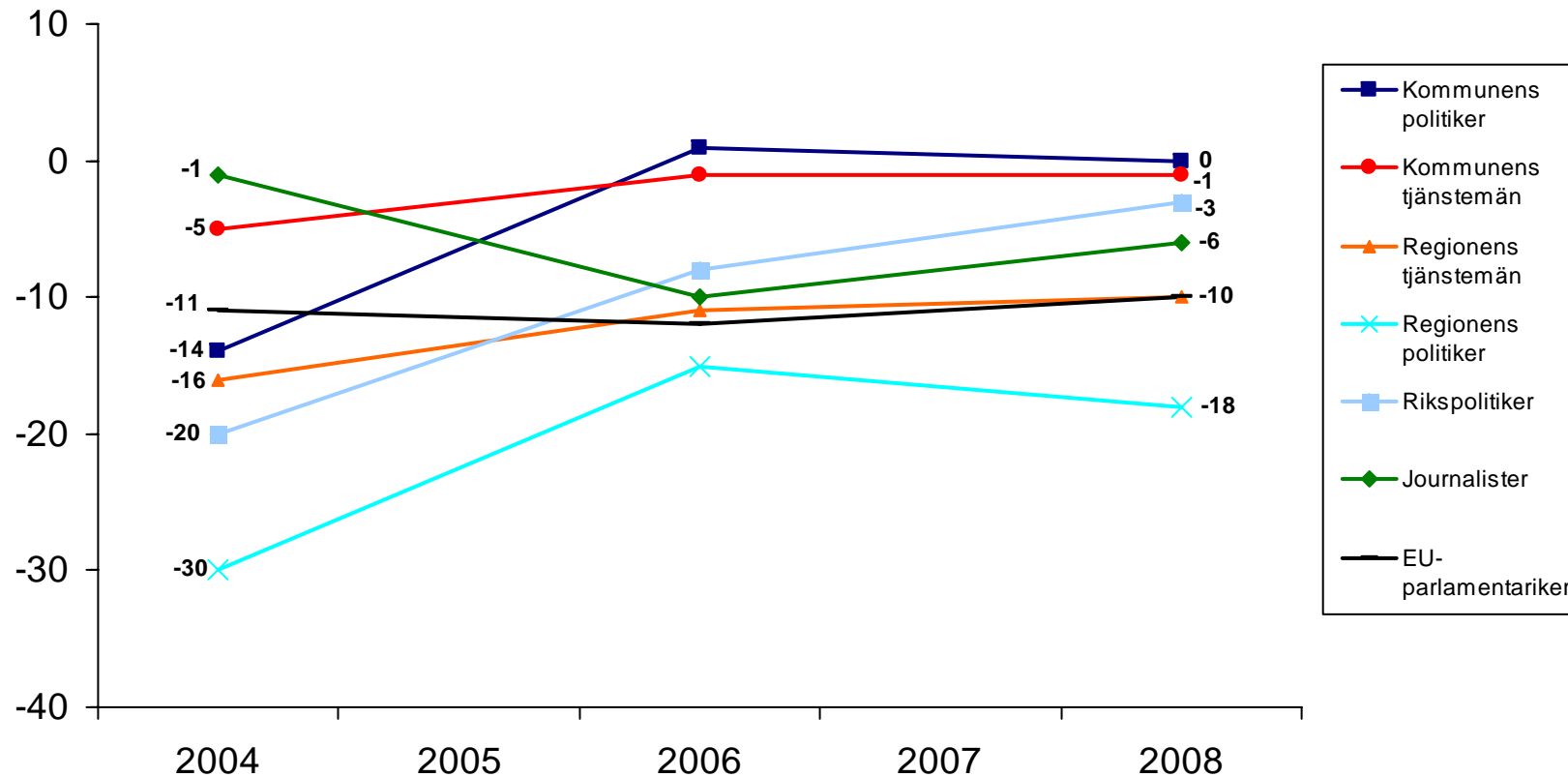
Förtroende för yrkesgrupper 2004-2008 (balansmått)

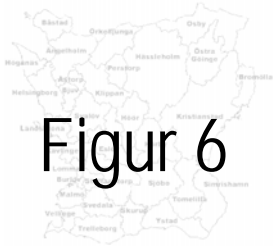




Figur 5

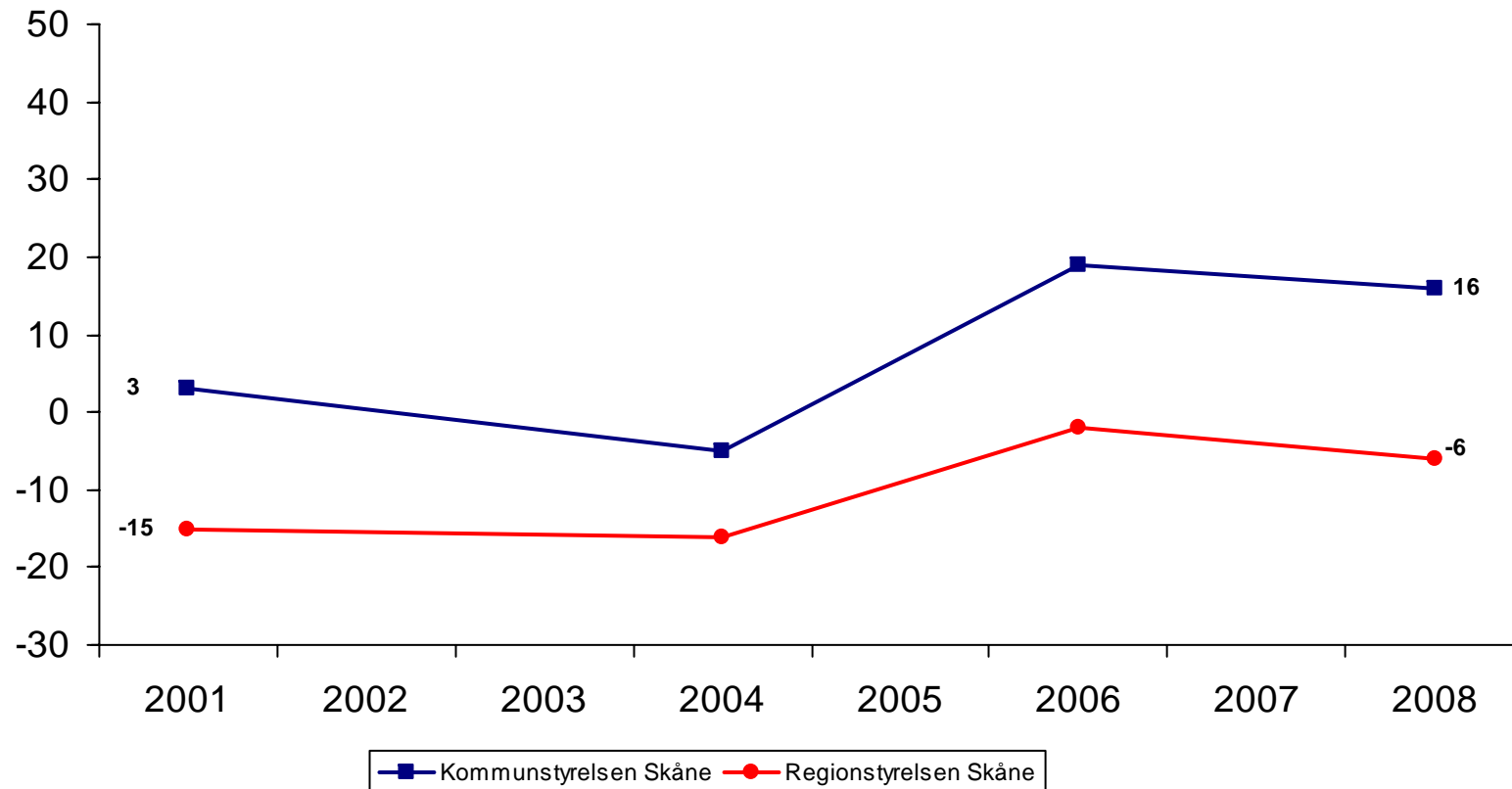
Förtroende för politiker, tjänstemän och journalister (balansmått)

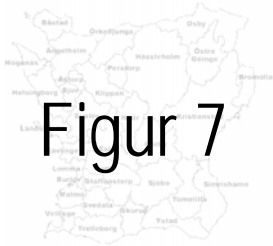




Figur 6

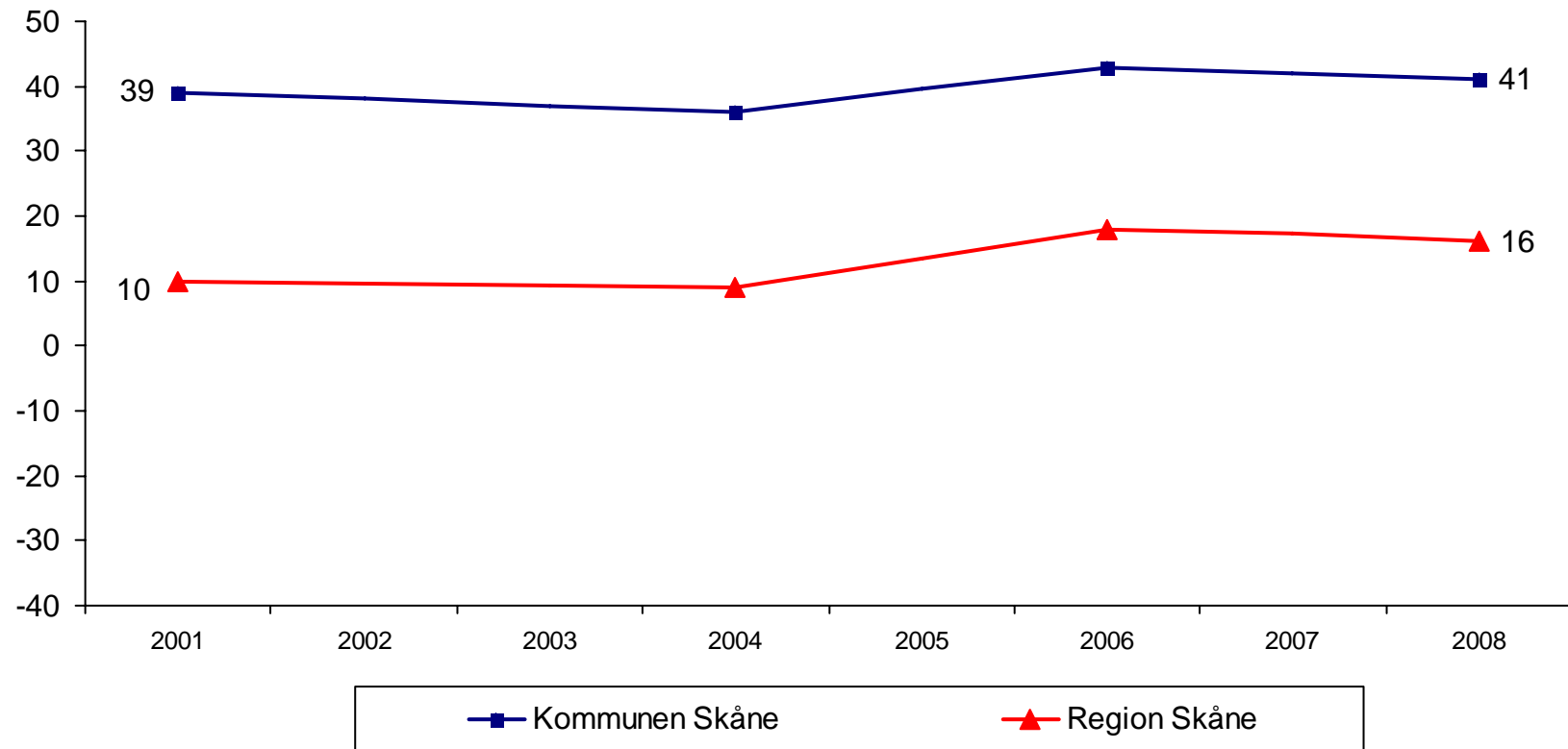
Hur kommunen och regionstyrelsen sköter sitt arbete (balansmått)

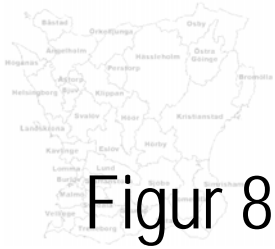




Figur 7

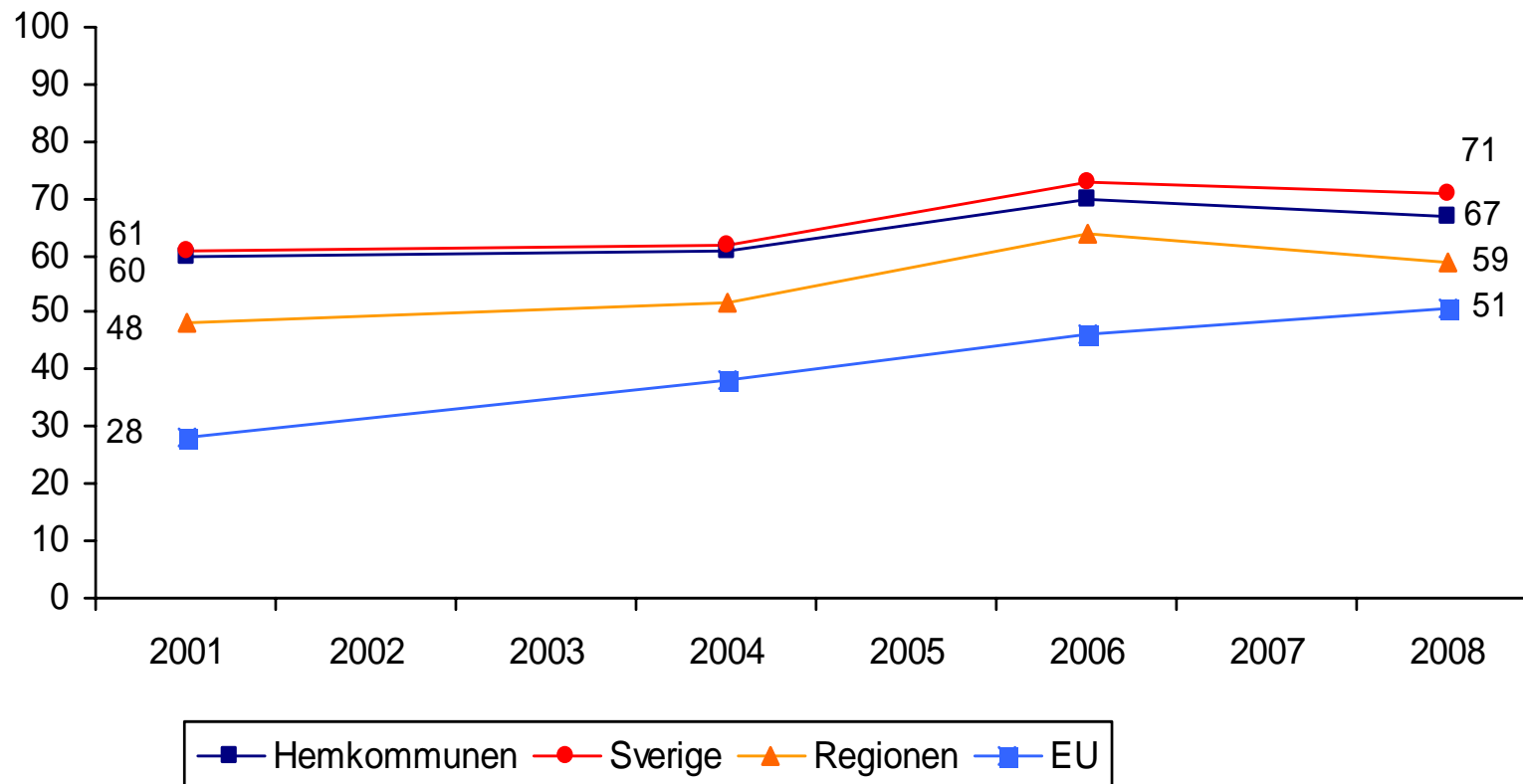
Bedömning av servicen som helhet i kommunen respektive i Skåne (balansmått)





Figur 8

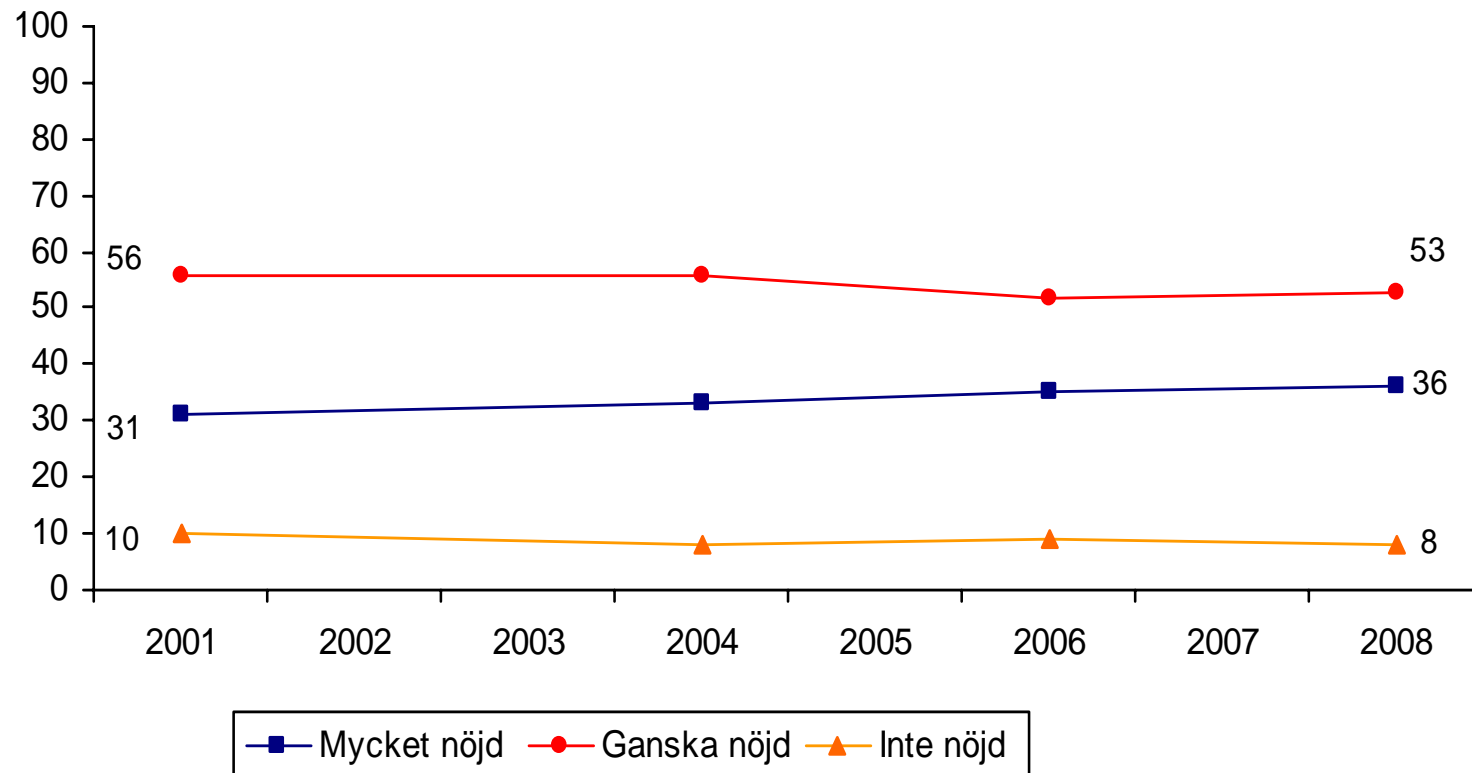
Nöjd med demokratin på olika nivåer (procent)





Figur 9

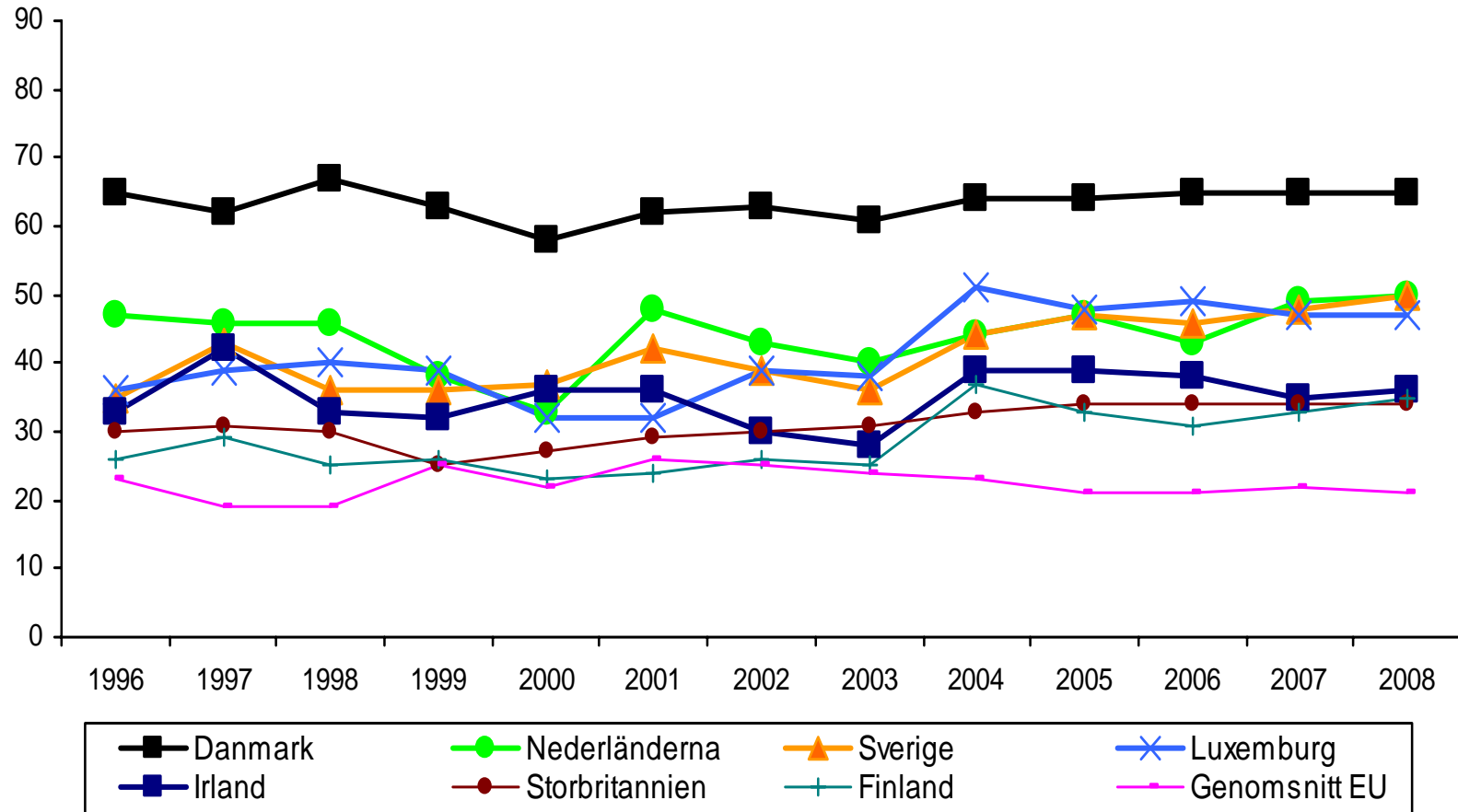
Allmän livstillfredsställelse i Skåne 2001 - 2008 (procent)

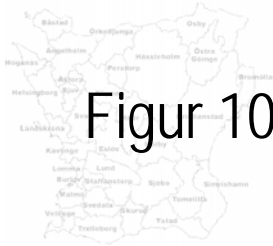




Figur 10a

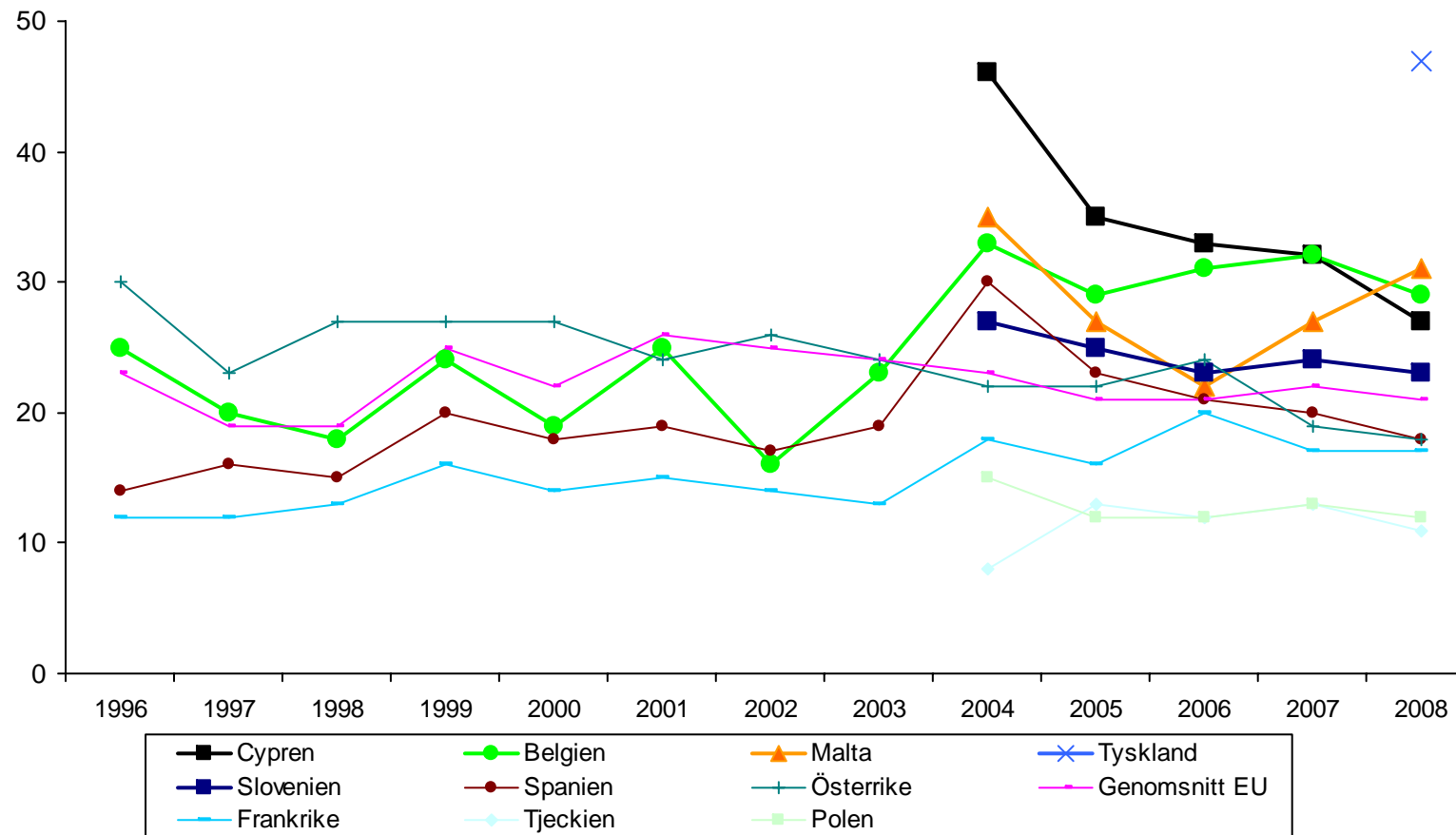
Allmän livstillfredsställelse i EU-länderna 1996-2008 (procent)

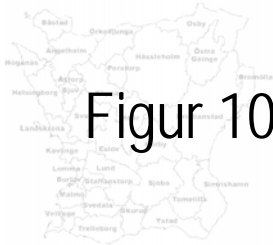




Figur 10b

Allmän livstillfredsställelse i EU-länderna 1996-2008 (procent)





Figur 10c

Allmän livstillfredsställelse i EU-länderna 1996-2008 (procent)

