

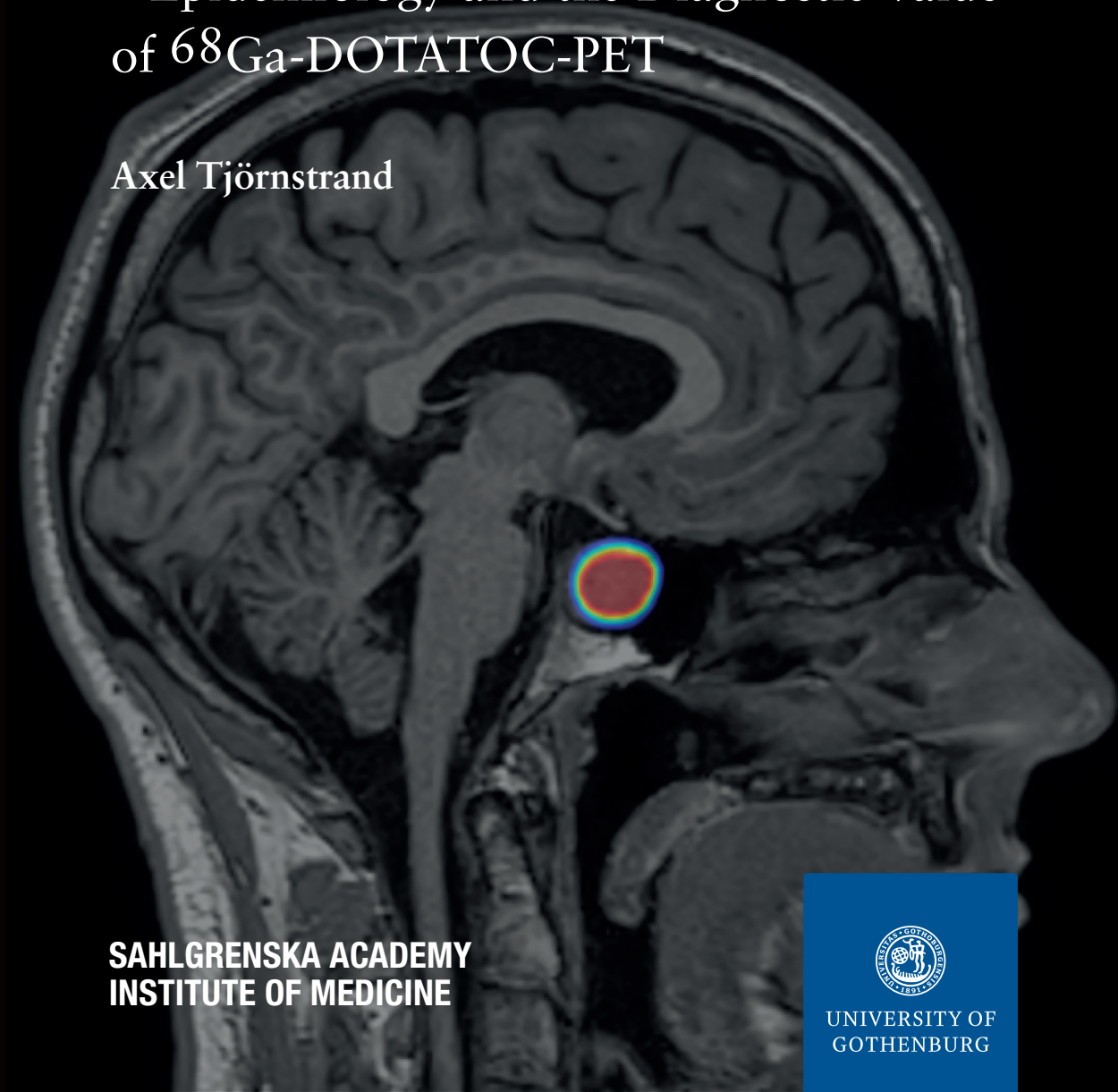
DOCTORAL
THESIS
SAHLGRENKA
ACADEMY

2020

Pituitary Tumors

– Epidemiology and the Diagnostic Value
of ^{68}Ga -DOTATOC-PET

Axel Tjörnstrand



Pituitary Tumors - Epidemiology and the Diagnostic Value of ^{68}Ga -DOTATOC-PET | Axel Tjörnstrand

SAHLGRENKA ACADEMY
INSTITUTE OF MEDICINE



UNIVERSITY OF
GOTHENBURG

ISBN 978-91-8009-066-7 (PRINT)
ISBN 978-91-8009-067-4 (PDF)
<http://hdl.handle.net/2077/65130>

Printed by Stema Specialtryck AB, Borås